

This problem set is not homework. Students can use this problem set as extra practice or study guide for quizzes.

1. a) Solve the equation  $3x^2 - 10x = -6$  by completing the square.

b) Check your answer using exact values.

2. Solve each of the following system of equations.

$$\text{a) } \begin{cases} 2x - y = -1 \\ 5x - 2y = 2 \end{cases} \quad \text{b) } \begin{cases} 2x - 5y = -9 \\ x - y = -3 \end{cases} \quad \text{c) } \begin{cases} 3x + 5y = -20 \\ \frac{1}{3}x - \frac{1}{2}y = 2 \end{cases}$$

$$\text{d) } \begin{cases} (x - 4)^2 + (y + 2)^2 + 2 = (x - 5)^2 + (y + 1)^2 \\ x + 2y = -3 \end{cases}$$

3. Compute each of the following sums.

$$\text{a) } 150 + 155 + 160 + \dots + 400 \quad \text{b) } 290 + 297 + 304 + \dots + 794$$

4. Label each of the following as true or false.

a) The product of two prime numbers is never a prime number.

b) The sum of two prime numbers is never a prime number.

c) Suppose that  $x$  and  $y$  are positive integers. If we divide  $x$  by 5, the remainder is 2. If we divide  $y$  by 5, the remainder is 3. Then  $x + y$  is divisible by 5.

d) There are five different one-digit prime numbers.

5. Simplify each of the following.

$$\text{a) } \frac{2 - 3^{-1}}{3 - 2^{-1}}$$

$$\text{d) } \left( \frac{2a^3b^{-2}}{-3a^{-1}b^6} \right)^0$$

$$\text{h) } \frac{x^2 - 10x + 21}{x^2 - 2x - 35} \div \frac{x^2 - 9}{2x^2 + 10x}$$

$$\text{b) } \frac{x^2 - x - 2}{x^2 - 1}$$

$$\text{e) } (\sqrt{5})^4$$

$$\text{i) } \frac{3a^2b^{-3}a^{-5}}{-3a^{-2}b^3}$$

$$\text{c) } \frac{\left(\frac{1}{2}\right)^{-2} - \left(\frac{2}{3}\right)^{-1}}{5^{-1} - 2^{-1}}$$

$$\text{f) } (2\sqrt{5} - 4)^3 (2\sqrt{5} + 4)^3$$

$$\text{j) } \frac{1}{2} (\sqrt{a-2} + \sqrt{a+2})^2$$

$$\text{g) } \frac{3x - 1}{1 - 3x}$$

$$\text{k) } \frac{2}{\sqrt{3} + 5} - \frac{2}{\sqrt{3} - 5}$$

6. Let  $\Phi = \frac{1 + \sqrt{5}}{2}$ . (This number is called the golden mean or golden ratio.)

a) Compute  $\Phi^2 - \frac{1}{\Phi}$ .      b) Prove that  $\frac{1}{\Phi} = \Phi - 1$ .

7. Rationalize the denominator in  $\frac{\sqrt{8} - \sqrt{6}}{\sqrt{8} + \sqrt{6}}$ .

8. Prove that the decimal  $0.28\overline{719} = 0.28719719719\dots$  represents a rational number by re-writing it as a fraction of two integers. You do NOT have to bring the fraction to lowest terms.

9. Compute the perimeter and area of the parallelogram determined by the points  $A(-3, 4)$ ,  $B(21, 14)$ ,  $C(21, 30)$ , and  $D(-3, 20)$ .

10. Compute the exact value of the distance between the points given.

a)  $A(2, -9)$  and  $B(5, -5)$       b)  $P(-4, 6)$  and  $Q(3, 5)$

c) Find the value(s) of  $k$  for which the distance between the points  $A(-3, 1)$  and  $B(3, k)$  is 10 units.

11. Find the slope of each of the following lines.

- a) the line connecting  $A(3, -5)$  and  $B(-2, 10)$     b) the line  $y = -\frac{2}{3}x + 6$     c) the line  $3x - 4y = 12$

12. Find the value of  $k$  if we know that the line connecting  $A(-1, 3)$  and  $B(5, k)$  has slope 2.

13. Factor each of the following over the integers.

- a)  $x^2 - x$     c)  $9x^2 - 1$     e)  $12x^2 - x - 1$     g)  $9x^2 - 6x - 1$   
 b)  $x^3 - x$     d)  $(a + b - c)^2 - (a - b + c)^2$     f)  $x^2 - 5$     h\*)  $x^2 - 6x + 9 - 25c^2$

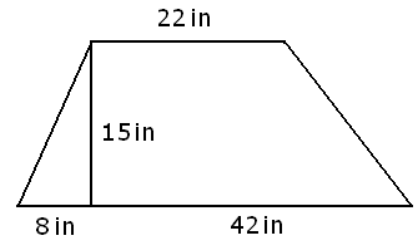
14. Solve each of the following equations.

- a)  $(x - 3)^2 - (2x - 5)^2 = -x^2 - (x + 1)^2$     e)  $(3 - 2(x - 4(x - 3(x - 5)))) = 105$   
 b)  $\frac{3x + 6}{4} - \frac{x - 1}{3} = x - 4$     f)  $2x^2 - 8x = -26$   
 c)  $\frac{2}{3}(x - 5) - \frac{3}{2}(x + 2) = \frac{7}{6}$     g)  $(3x - 1)(x - 3) - x = 3(x - 2)^2$   
 d)  $\sqrt{5x + 1} + 1 = x$     h)  $2x^2 = x + 3$

15. Compute the perimeter and area of the trapezoid shown on the picture.

16. Solve each of the following inequalities.

- a)  $\frac{4x - 1}{5} - \frac{x + 1}{2} \geq x - 7$     b)  $\frac{2}{5}x - 1 \leq \frac{1}{2}x - \frac{3}{4}$   
 c)  $(x + 3)^2 - (x - 3)^2 < 60$



17. Solve each of the following compound inequalities.

- a)  $x(x - 3) - 3x > (x - 2)^2$  and  $\frac{-3x + 5}{2} < -8$   
 b)  $x(x - 3) - 3x > (x - 2)^2$  or  $\frac{-3x + 5}{2} < -8$   
 c)  $(x + 2)^2 - (x - 1)^2 < 3(x - 10)$  and  $\frac{1}{2}x - \frac{1}{3} < \frac{1}{3} - \frac{1}{6}x$   
 d)  $(x + 2)^2 - (x - 1)^2 < 3(x - 10)$  or  $\frac{1}{2}x - \frac{1}{3} < \frac{1}{3} - \frac{1}{6}x$

18. a) Find the smallest value of the expression  $2x^2 - 12x - 10$ .

b) Find the greatest value of  $-3x^2 + 12x + 36$

19. a) Graph the line  $5x - 4y = -7$

b) Graph the parabola  $y = -2x^2 + 16x - 14$ . State the coordinates of at least five points, including vertex and intercepts.

20. Compute the exact value of the perimeter and area of a right triangle if its shorter sides are

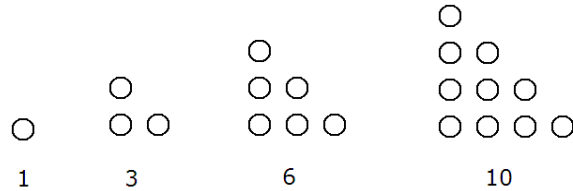
- a) 10 cm and 24 cm long    b) 5 ft and 10 ft long

21. We invested a total of \$4000 in two bank accounts. One account earns an annual interest of 3%, the other account earns an annual interest of 5%. How much was invested into each account if the combined interest from the two accounts after one year was \$183?

22. We invested a total of \$4000 in two different stocks. After one year, one stock earned a 7% profit but the other stock suffered a loss of 3%. How much was invested into each stock if the combined gain from the two stocks after one year was \$50?

23. The hypotenuse of a right triangle is 74 m long. The difference between the other two sides is 46 m. Find the sides of this triangle.
24. We have 240 coins, all dimes and nickels. How many dimes and how many nickels do we have if the value of all coins is \$18.80?
25. The sum of four consecutive even numbers is 76. Find these numbers.
26. The square of a number is 60 greater than four times the number. Find this number.
27. In the fourth period, teachers took attendance in Springfield High School. Some of the female students had a field trip today. We know that if 15% of all girls left for a field trip, the total attendance school-wide drops by 10%. What percent of the students is female?
28. We eject a small object upward from the top of a 768 ft tall building. The vertical position (or height)  $h$  of the object, (measured in feet)  $t$  seconds after we threw it is  $h = -16t^2 + 128t + 768$ .
  - a) How long does it take for the object to hit the ground?
  - b) What is the highest point that the object reaches?
29. Children's tickets cost \$12 each and adults' tickets cost \$18 each. We purchased 50 tickets for a total of \$642. How many of each tickets did we buy?
30. The longer side of a rectangle is 15 ft long. The diagonal is 17 ft long. Compute the area of the rectangle.
31. The hypotenuse of a right triangle is 8 m shorter than twice the shortest side. The second longest side is 8 m longer than the shortest side. Find the sides of this triangle.
32. How many people are in the room if we know that everyone shook hands with everyone and there were 595 handshakes?
33. Find all numbers for which the following is true: the opposite of the number is equal to the square of the number.
34. One number is four less than twice another. Find these numbers if their product is 70.
35. If we increase all sides of a square by 1 feet, the square's area will increase by  $15 \text{ ft}^2$ . How long are the sides of the original square?
36. A company finds that if they set the price of their new product at \$30, then 1000 items will be sold. For every dollar increase in the price, 5 less tickets would be purchased. What is the greatest revenue possible with this product? What price would guarantee this maximum income?
37. The first row in a theater has 33 seats in it. The second row has four more seats than the first row. The third row has four more seats than the second row. And so on, each row has three more seats than the row before. If the last row has 193 seats in it, how many seats are there in the entire theater?
38. The square of a number is 8 greater than twice the opposite of the number. Find this number.
39. The farm raised chickens and cows. If all the animals together had 82 heads and 288 legs, how many chickens and how many cows are there on the farm?
40. Find the height of the square based pyramid if all of its edges are 12 cm long.
41. One side of a rectangle is 24 cm shorter than four times the other side. Find the length of the sides if the area of the rectangle is  $160 \text{ cm}^2$ .
42. Ann and Betsy are friends. One day Betsy tells Ann: "*If you gave me five dollars, we would end up with the same amount of money.*" Ann responds: "*Yes, but if you gave me five dollars instead, then I would have twice as much money as you.*" How much money did they have?

43. a) Find a formula for  $1 + 2 + 3 + 4 + \dots + n$  in terms of the positive integer  $n$ .  
 b) Recall the triangular numbers, 1, 3, 6, 10, and so on. The first four triangular numbers are shown on the picture. Find the 100th triangular number.  
 c) Prove that the sum of two consecutive triangular numbers is always a square number.



44. Which number has more divisors,  $2^{100}$  or  $3^{100}$ ? (Hint: if you do not know the answer with 100 for exponents, try 1, 2, 3, 4, etc and the idea will come!)
45. Simplify each of the following.  
 a)  $\frac{3 \cdot 2^{2020} - 2^{2019}}{2^{2018}}$       b)  $2^{2018} + 2^{2018}$
46. \*Find the area of the triangle determined by the points  $A(-7, 4)$ ,  $B(-3, -2)$ , and  $C(5, 1)$ .
47. \*The conference of medical staff was very well attended. Nurses and doctors have attended. All together, there were 45 people present. Every doctor shook hands with all other doctors and every nurse shook hands with all other nurses, but there wasn't a single handshake between a doctor and a nurse. How many doctors and nurses were there if the total number of handshakes was 486?

### Answers

1. a)  $\frac{5 \pm \sqrt{7}}{3}$       b) When  $x = \frac{5 - \sqrt{7}}{3}$ , then

$$\begin{aligned} \text{LHS} &= 3 \left( \frac{5 - \sqrt{7}}{3} \right)^2 - 10 \left( \frac{5 - \sqrt{7}}{3} \right) = 3 \cdot \frac{(5 - \sqrt{7})^2}{3^2} - 10 \cdot \frac{5 - \sqrt{7}}{3} = 3 \cdot \frac{25 + 7 - 10\sqrt{7}}{3 \cdot 3} - \frac{10(5 - \sqrt{7})}{3} \\ &= \frac{32 - 10\sqrt{7} - 10(5 - \sqrt{7})}{3} = \frac{32 - 10\sqrt{7} - 50 + 10\sqrt{7}}{3} = \frac{-18}{3} = -6 = \text{RHS} \end{aligned}$$

and when  $x = \frac{5 + \sqrt{7}}{3}$ , then

$$\begin{aligned} \text{LHS} &= 3 \left( \frac{5 + \sqrt{7}}{3} \right)^2 - 10 \left( \frac{5 + \sqrt{7}}{3} \right) = 3 \cdot \frac{(5 + \sqrt{7})^2}{3^2} - 10 \cdot \frac{5 + \sqrt{7}}{3} = 3 \cdot \frac{25 + 7 + 10\sqrt{7}}{3 \cdot 3} - \frac{10(5 + \sqrt{7})}{3} \\ &= \frac{32 + 10\sqrt{7} - 10(5 + \sqrt{7})}{3} = \frac{32 + 10\sqrt{7} - 50 - 10\sqrt{7}}{3} = \frac{-18}{3} = -6 = \text{RHS} \end{aligned}$$

2. a) (4, 9)    b) (-2, 1)    c) (0, -4)    d) (7, -5)    3. a) 14 025    b) 39 566    4. a) true    b) false    c) true    d) false

5. a)  $\frac{2}{3}$     b)  $\frac{x-2}{x-1}$     c)  $-\frac{25}{3}$     d) 1    e) 25    f) 64    g) -1    h)  $\frac{2x}{x+3}$     i)  $-\frac{1}{ab^6}$     j)  $a + \sqrt{a^2 - 4}$     k)  $\frac{10}{11}$

6. a) 2    b) see solutions at the end    7.  $7 - 2\sqrt{12}$     8.  $\frac{28691}{99900}$     9.  $P = 84$  unit,  $A = 384$  unit<sup>2</sup>

10. a) 5 unit    b)  $\sqrt{50} = 5\sqrt{2}$  unit    c) -7, 9    11. a) -3    b)  $-\frac{2}{3}$     c)  $\frac{3}{4}$     12. 15

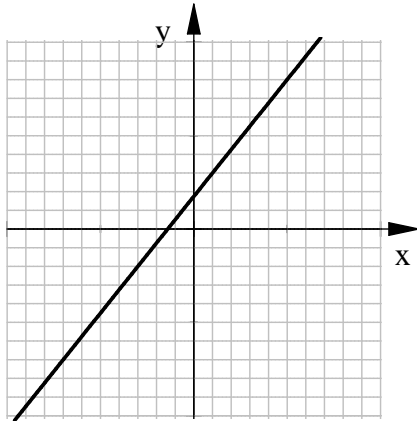
13. a)  $x(x-1)$  b)  $x(x-1)(x+1)$  c)  $(3x-1)(3x+1)$  d)  $4a(b-c)$  e)  $(3x-1)(4x+1)$  f)  $x^2-5$   
g)  $9x^2-6x-1$  h)  $(x+5c-3)(x-5c-3)$

14. a) 1, 15 b) 10 c) -9 d) 7 (0 is extreme) e) 1 f) no real solution g) 9 h)  $-1, \frac{3}{2}$

15.  $P = 114 \text{ in}, A = 540 \text{ in}^2$  16. a)  $(-\infty, 9]$  b)  $\left[-\frac{5}{2}, \infty\right)$  c)  $(-\infty, 5)$

17. a)  $\emptyset$  b)  $(-\infty, -2) \cup (7, \infty)$  c)  $(-\infty, -11)$  d)  $(-\infty, 1)$  18. a) -28 b) 48

19. a)  $5x - 4y = -7$



b)  $y = -2x^2 + 16x - 14$

$y$ -intercept:  $(0, -14)$

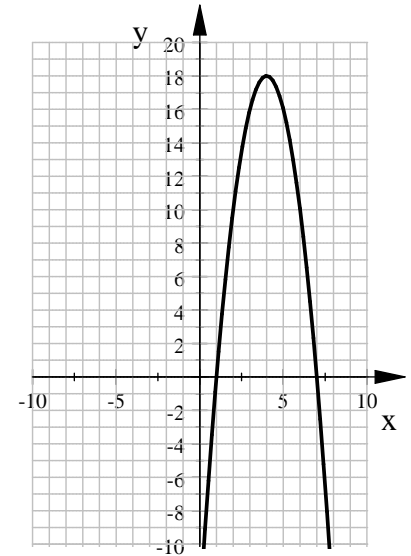
vertex:  $(4, 18)$

$x$ -intercepts:

$(1, 0)$  and  $(7, 0)$

additional points:

$(3, 16)$  and  $(5, 16)$



20. a)  $P = 60 \text{ cm}$   $A = 120 \text{ cm}^2$  b)  $P = 15 + 5\sqrt{5} \text{ ft}$   $A = 25 \text{ ft}$  21. \$850 at 3% and \$3150 at 5%

22. \$1700 gained 7% and \$2300 lost 3% 23. 24 m, 70 m, and 74 m 24. 104 nickels and 136 dimes

25. 16, 18, 20, 22 26. -6 and 10 27.  $66.\bar{6}\%$  28. a) 12 seconds b) 1024 ft 29. 43 children's tickets, 7 adult tickets

30.  $120 \text{ ft}^2$  31. 24 m, 32 m, and 40 m 32. 35 33. 0, -1 34. -5 with -14 and 7 with 10 35. 7 ft

36. \$66 125 with a price of \$115 37. 4633 38. -4, 2 39. 20 chickens and 62 cows 40.  $6\sqrt{2} \text{ cm}$  41. 10 cm by 16 cm

42. Ann has \$35, Betsy has \$25 43. a)  $\frac{n(n+1)}{2}$  b) 5050 c) see solutions 44. Both have 101 divisors.

45. a) 10 b)  $2^{2019}$  46. 30 unit<sup>2</sup> 47. 21 doctors and 24 nurses or 24 doctors and 21 nurses

## Solutions

6. Let  $\Phi = \frac{1 + \sqrt{5}}{2}$ . (This number is called the golden mean or golden ratio.) a) Computing  $\Phi^2 - \frac{1}{\Phi}$ .

$$\begin{aligned} \Phi^2 - \frac{1}{\Phi} &= \left(\frac{1 + \sqrt{5}}{2}\right)^2 - \frac{1}{\frac{1 + \sqrt{5}}{2}} = \frac{6 + 2\sqrt{5}}{4} - \frac{2}{\sqrt{5} + 1} = \frac{3 + \sqrt{5}}{2} - \frac{2}{\sqrt{5} + 1} \cdot \frac{\sqrt{5} - 1}{\sqrt{5} - 1} \\ &= \frac{3 + \sqrt{5}}{2} - \frac{2(\sqrt{5} - 1)}{5 - 1} = \frac{3 + \sqrt{5}}{2} - \frac{2(\sqrt{5} - 1)}{4} = \frac{3 + \sqrt{5}}{2} - \frac{\sqrt{5} - 1}{2} = \frac{3 + \sqrt{5} - (\sqrt{5} - 1)}{2} = \frac{4}{2} = 2 \end{aligned}$$

b) Proving that  $\frac{1}{\Phi} = \Phi - 1$ . Solution:  $\frac{1}{\Phi} = \frac{2}{1 + \sqrt{5}}$  We rationalize the denominator

$$\begin{aligned} \frac{1}{\Phi} &= \frac{2}{1 + \sqrt{5}} = \frac{2}{\sqrt{5} + 1} \cdot \frac{\sqrt{5} - 1}{\sqrt{5} - 1} = \frac{2(\sqrt{5} - 1)}{5 - 1} = \frac{2(\sqrt{5} - 1)}{4} = \frac{\sqrt{5} - 1}{2} \\ \Phi - 1 &= \frac{1 + \sqrt{5}}{2} - 1 = \frac{1 + \sqrt{5}}{2} - \frac{2}{2} = \frac{\sqrt{5} + 1 - 2}{2} = \frac{\sqrt{5} - 1}{2} \end{aligned} \quad \text{Thus } \frac{1}{\Phi} = \Phi - 1$$

27. Let  $g$  denote the number of female students. Let  $S$  denote the total number of students. 15% of the girls is the same as 10% of all students.

$$\begin{aligned} 0.15g &= 0.1S && \text{multiply by 100} \\ 15g &= 10S \\ g &= \frac{10}{15}S = \frac{2}{3}S \end{aligned}$$

Thus two thirds of the students are girls, which is  $\frac{2}{3} = 0.\bar{6} = \frac{0.\bar{6}}{1} = \frac{66.\bar{6}}{200} = 66.\bar{6}\%$ .

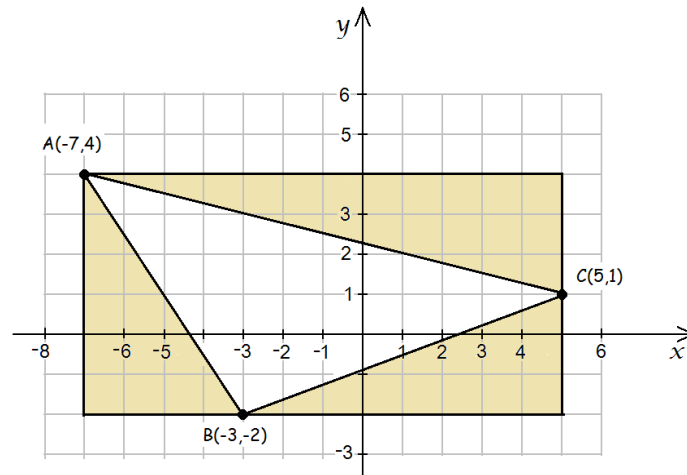
43. c) The  $n$ th triangular number is  $\frac{n(n+1)}{2}$ . The next one is obtained by substituting  $n+1$  into  $n$ :

$$\frac{n(n+1)}{2} \text{ becomes } \frac{(n+1)((n+1)+1)}{2} = \frac{(n+1)(n+2)}{2}$$

We add the two:

$$\begin{aligned} S &= \frac{n(n+1)}{2} + \frac{(n+1)(n+2)}{2} && \text{we have a common denominator} \\ &= \frac{n(n+1) + (n+1)(n+2)}{2} && \text{factor out } n+1 \\ &= \frac{(n+1)[n + (n+2)]}{2} = \frac{(n+1)(2n+2)}{2} = \frac{(n+1)(2)(n+1)}{2} = (n+1)^2 \end{aligned}$$

46. Hint: Find the area of the rectangle and then subtract the right triangles in the corners.



47. If there are  $x$  many doctors, then the number of nurses is  $45-x$ . The number of handshakes between doctors:  $\frac{x(x-1)}{2}$  between nurses:  $\frac{(45-x)(45-x-1)}{2}$ . Then the number of handshakes is  $486 = \frac{x(x-1)}{2} + \frac{(45-x)(44-x)}{2}$ . We solve this quadratic equation for  $x$ .